

**athena**  
CENTRAL



AthenaCentral - Health Club Management Software - Wellness, Beauty, Fitness centers - Health club chains - Hotel Gyms - Golf, Tennis Clubs - Spa's

# ATHENAHOST SETUP

By

**VT Virtual Technology**

[www.athenacentral.com](http://www.athenacentral.com)  
[www.vtvirtual.com](http://www.vtvirtual.com)

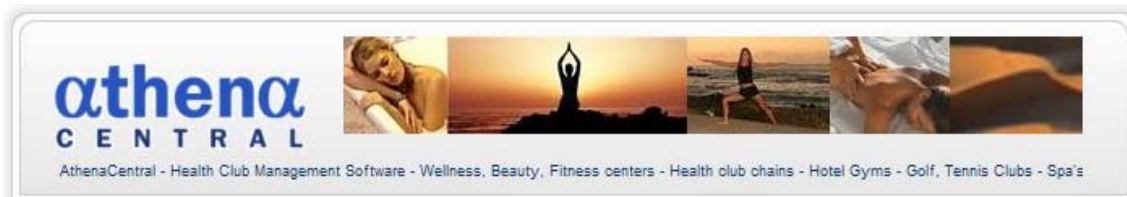
**March 2009**

**athena**  
CENTRAL



AthenaCentral - Health Club Management Software - Wellness, Beauty, Fitness centers - Health club chains - Hotel Gyms - Golf, Tennis Clubs - Spa's

1. **AthenaHost service**
2. **Virtual Ports**
3. **AthenaCLI service controller**
4. **Citrix test**



## 1. AthenaHost service

### Prerequisites

- Windows 2003/XP/Vista/2000
- **Disable UAC** if you are using Vista
- you must have administrative privileges

a/ Launch setup.exe to install the AthenaHost package

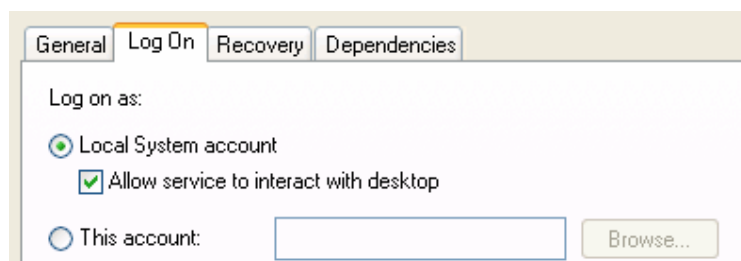
b/ Open the installation folder then modify utilinstall.bat and utilremove.bat to enter the installation path to athenahost.exe

c/ Run utilinstall.bat

d/ Open the control panel then administrative tools and services. You will see that the service is installed but not started

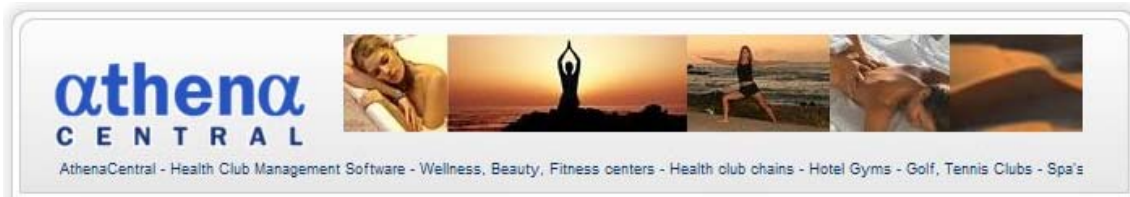
Name	Description	Status	Startup Type	Log On As
.NET Runtime Optim...	Microsoft .NET Frame...		Manual	Local System
Alerter	Notifies selected user...		Disabled	Local Service
Application Layer G...	Provides support for ...	Started	Manual	Local Service
Application Manage...	Provides software ins...		Manual	Local System
ASP.NET State Serv...	Provides support for ...		Manual	Network S...
Athena Host service			Automatic	Local System
Automatic Updates	Enables the downloa...	Started	Automatic	Local System

e/ Open the service properties and make sure to allow the service to interact with desktop



## 2. Virtual Ports

a/ Unzip the comOcom package then run setup



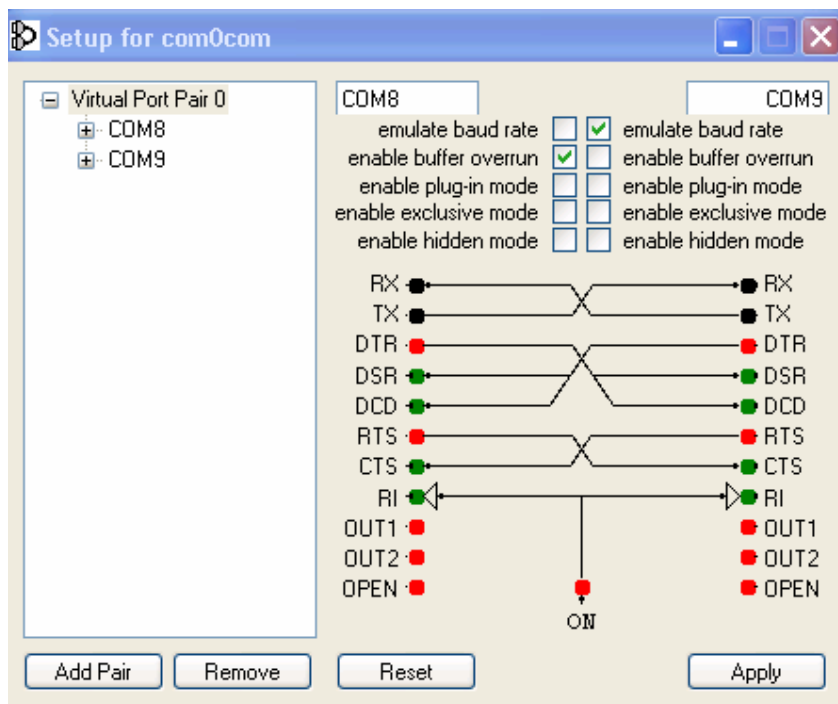
b/ Launch the comOcom setup command prompt shortcut and create a virtual com pair

**Example with com8/com9**

```
command> change CNCA0 PortName=COM8
```

```
command> change CNCB0 PortName=COM9
```

c/ Launch comOcom setup window then enter parameters



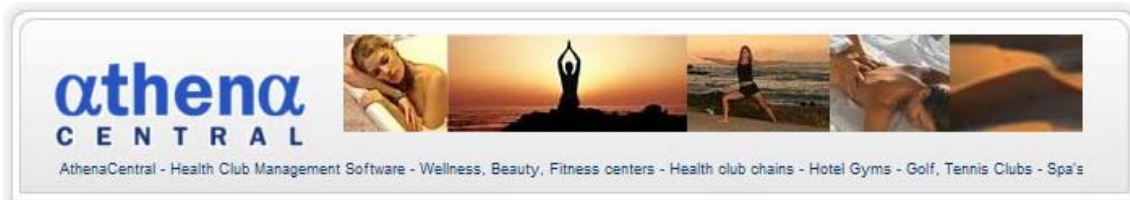
### 3. AthenaCLI service controller

AthenaCLI is the service controller that provides devices specifications to the AthenaHost service.

Athenacli.exe is located in the installation folder path.

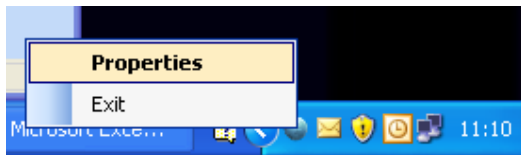
AthenaCLI takes care of the service status and can automatically restart AthenaHost in case of failure. It resides in the system tray after loading.

**In order to enable permanent control, you have to create a shortcut to Athenacli.exe in the startup folder.**



a/ Launch AthenaCLI

b/ Right click the athenacli icon in the system tray then select properties



Save the configuration



Go to system tray



Close AthenaCLI

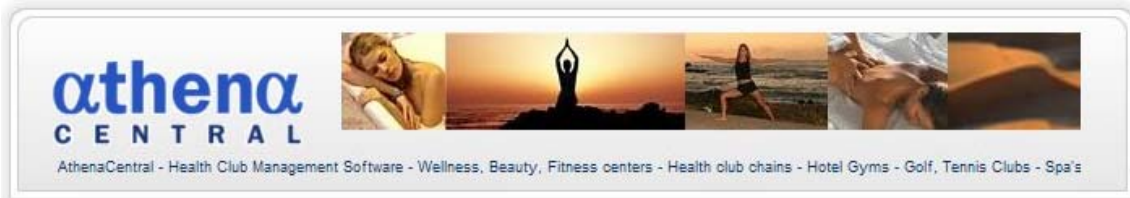
c/ Click the settings tab then enter your parameters

### Example

A Gantner - GAT writer 6000F installed on USB/COM3 in order to read Technogym keys

- (1) Contact your Gantner representative if you want to know more about GAT systems
- (2) Contact your Technogym representative if you want to know more about TGS systems

<input checked="" type="checkbox"/> Gantner	Mode USB	Polling (ms) 150	Read Technogym k
	Port COM3	Type MIFARE	Device 6000F



d/ Click the Virtual COM tab then enter port names

Virtual Pair #1


Read	Write
<input type="text" value="COM8"/>	<input type="text" value="COM9"/>


e/ Save your configuration


f/ Click the status tab then start the service


**Athena Service Controller**

Status Gateway Settings Virtual COM




 Start service  Auto Restart

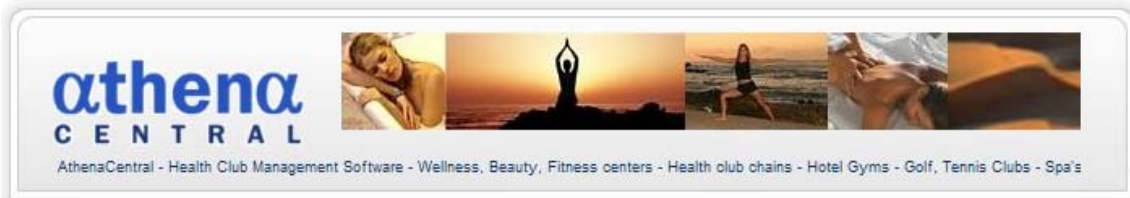
 Pause service

 Continue service

 Stop service

Service : Running



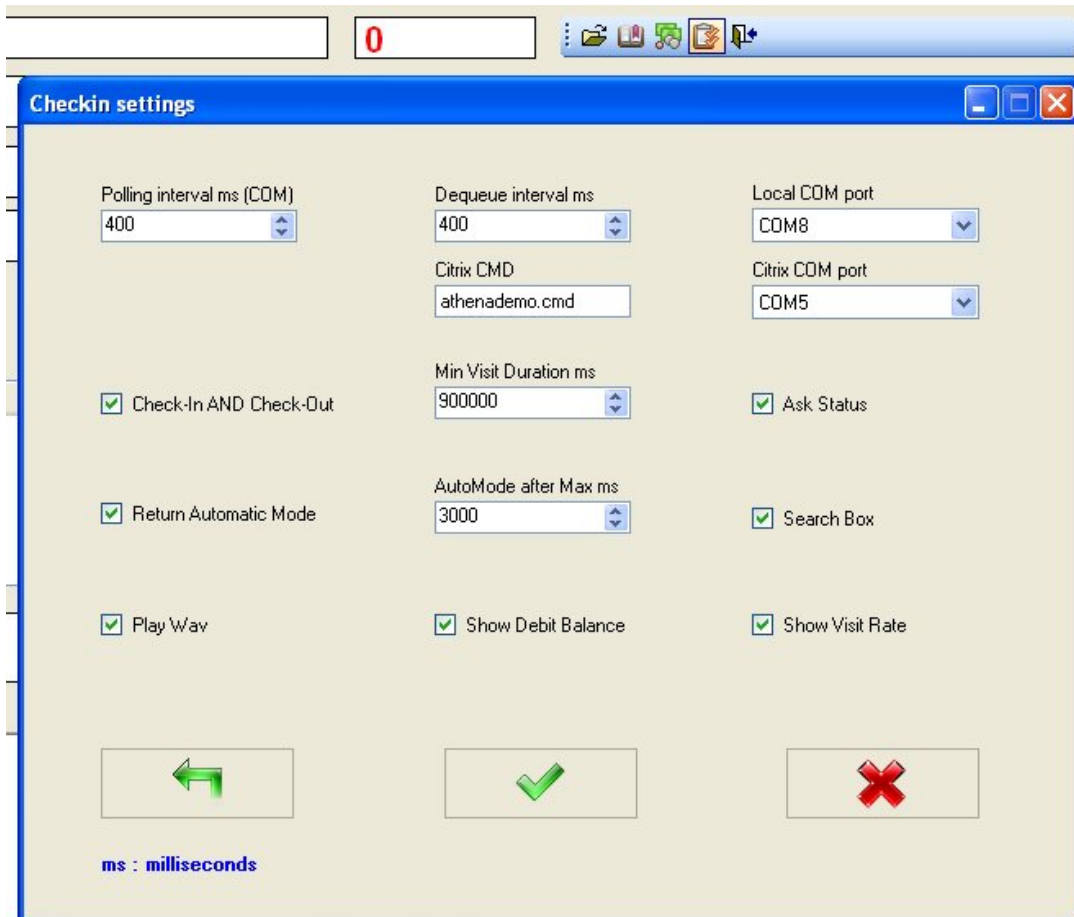
## 4. Citrix test

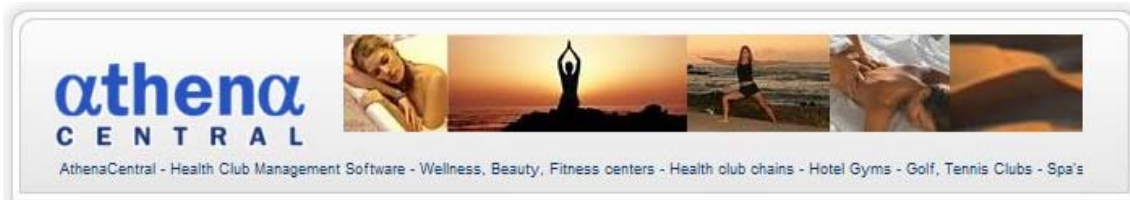
a/ Use your citrix credentials to connect to an AthenaCentral server

b/ Launch the Checkin (with reader)



c/ Click the preferences button then check your parameters and reload the checkin if needed





## Notes

- The checkin displays a search window when reading a key that is not assigned to a member. Enter a name or search all then assign the key.
- If you read a key then immediately try to read it again, there will be a 2 seconds temporization.
- The temporization avoids compulsive reading of the same key.